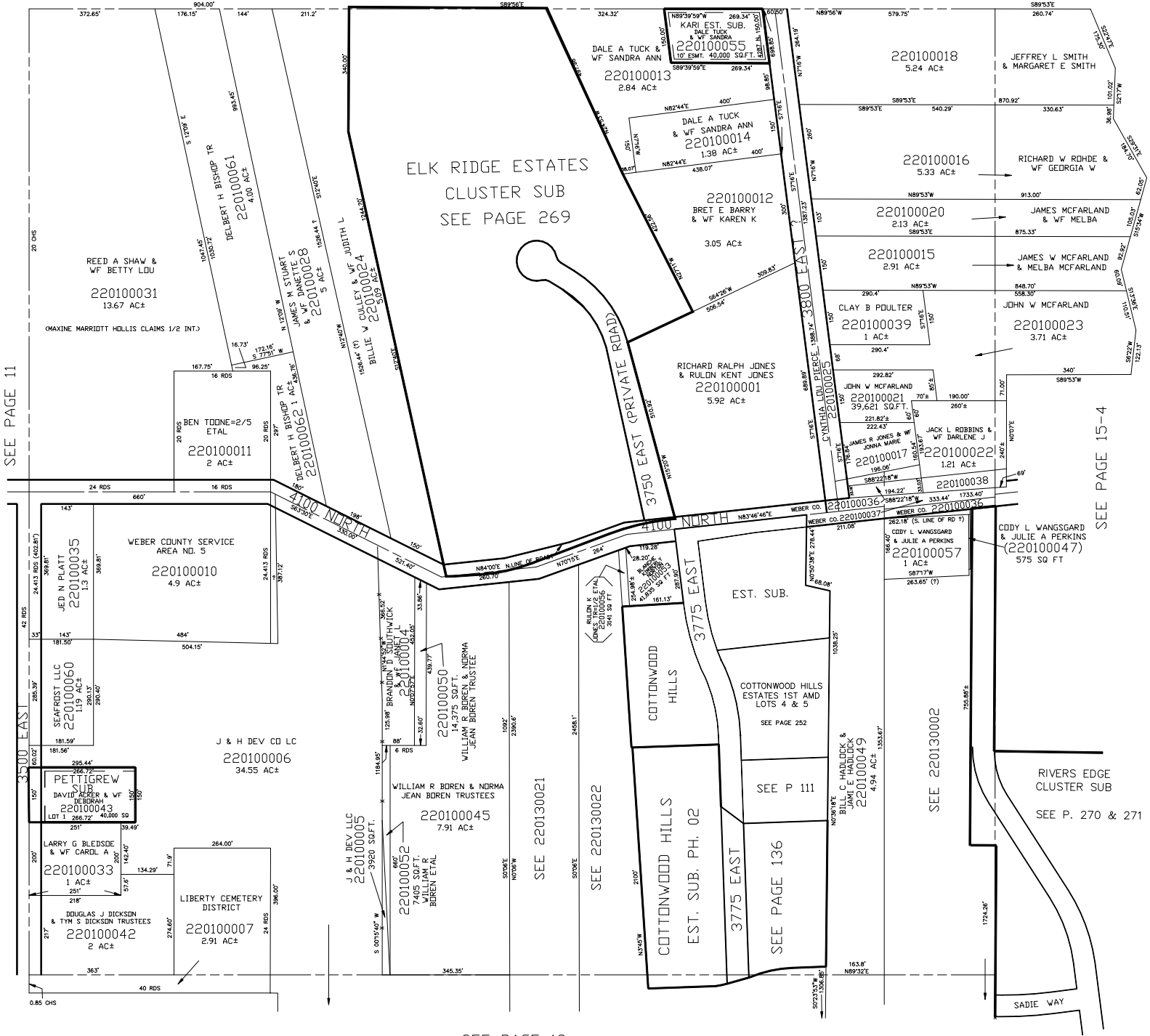


N.E. 1/4
 SECTION 20, T.7N., R.1E., S.L.B. & M.
 IN WEBER COUNTY
 SCALE 1" = 200'
 SEE PAGE 7

TAXING UNIT: 36

SEE PAGE 11

SEE PAGE 15-4



ELK RIDGE ESTATES
 CLUSTER SUB
 SEE PAGE 269

COTTONWOOD
 HILLS
 EST. SUB.
 SEE PAGE 252

COTTONWOOD HILLS
 EST. SUB. PH. 02
 SEE PAGE 136

RIVERS EDGE
 CLUSTER SUB
 SEE P. 270 & 271

SEE PAGE 13